

Bore Gages

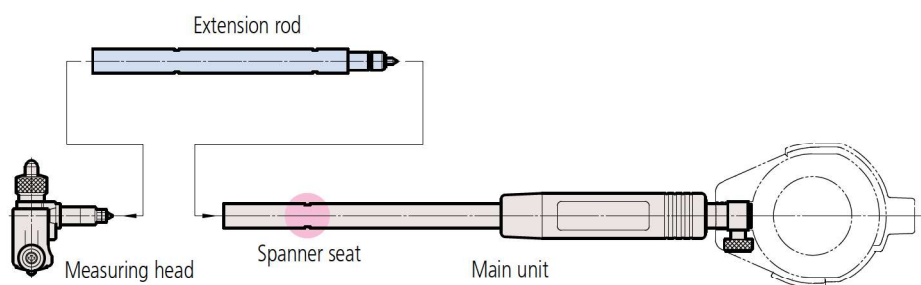
Extension Rod SERIES 511 — Accessories for Bore Gages

- Extension rods are available to assist in deep-hole measurement. (For applicable combination with bore gages, see the table below)

Note 1: When using a 500 mm (or longer) extension rod, use the bore gage in an upright position.

Note 2: Only one extension rod can be attached to a bore gage. It is not possible to use more than one extension rod.

Note 3: The extension rod cannot be used for products with a custom size or custom specifications.



SPECIFICATIONS

Applicable model Code No.	Extension rod length (mm)					Extension rod diameter (mm)	Spanner code No.
	125	250	500	750	1000		
511-701/511-731	953549	953550	953551	—	—	ø9	102148 (2 pcs.)
511-415/511-418							
511-416/511-419							
511-417/511-420							
511-702/511-732	953552	953553	953554	953555	953556	ø12	212556 (2 pcs.)
511-703/511-733							
511-704/511-734							
511-803/511-833							
511-804/511-834	953557	952361	953558	953559	953560	ø15	212556 (2 pcs.)
511-705/511-735							
511-706/511-736							
511-805/511-835							
511-806/511-836							
511-807/511-837							
511-808/511-838							

Note 1: If an extension rod is attached, the measuring accuracy may degrade due to factors such as rod deflection.

Note 2: Spanner is supplied as standard.